

WITSML CONVERTER AND STORAGE

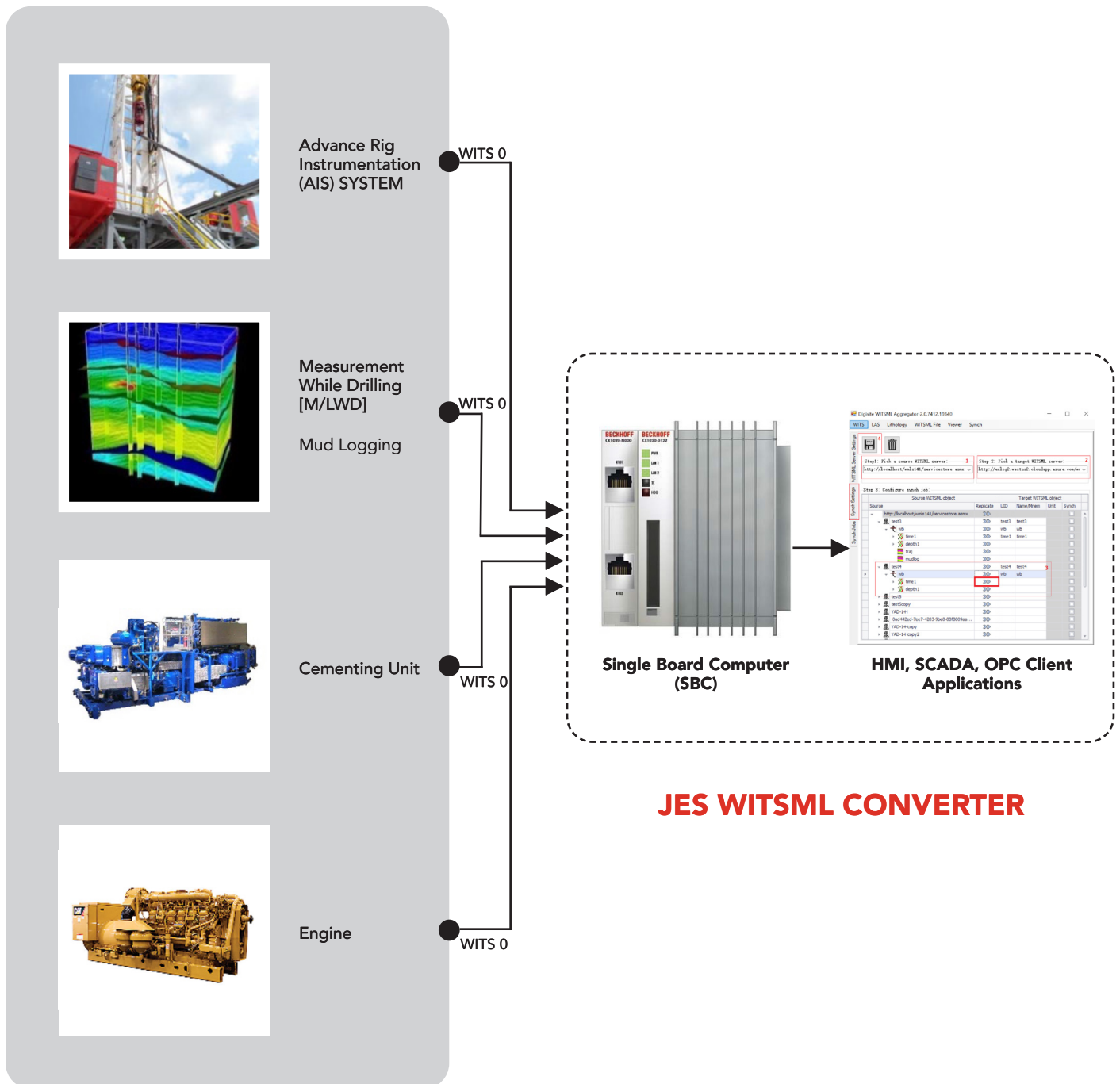
Jiach Energy Solutions - WITSML-PRO

Converter and Storage

The WITSML-PRO by Jiach Energy Solutions (JES) is a next-generation **business-to-business collaboration platform** designed for stakeholders in drilling operations. It enables seamless **conversion of wellsite data into WITSML**, supporting real-time monitoring, integration, and decision-making across the energy value chain.

Key Features

- **WITS Level 0 Passive OPC Server**
 - **WITS Level 0 → WITSML Conversion**
 - Supports versions: **1.3.1, 1.4.1, 2.0, 2.1**
 - **MODBUS TCP/IP → WITSML Conversion**
- Multi-protocol support including:
 - MODBUS TCP/IP
 - OPC
 - SLC 500 (Rockwell / Allen Bradley)
 - Step 7 (Siemens)



JES WITSML Converter Overview

The JES WITSML Converter enables efficient **data transfer from wellsite systems** such as:

- Measurement While Drilling (MWD)
- Cementing Units
- Engine Monitoring Systems
- Advanced Rig Instrumentation (AIS)
- Mud Logging Systems

Data is seamlessly delivered to:

- HMI systems
- SCADA platforms
- OPC client applications

This ensures **real-time visibility and monitoring** for exploration and production operations.

Scalability & Deployment Options

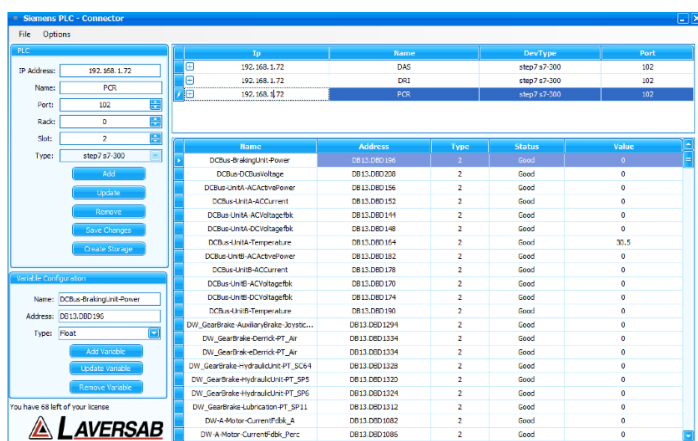
The platform is **highly scalable** and adaptable for various use cases:

Deployment Scenarios:

- **Project-based temporary storage**
 - Ideal for WITSML version migration
- **Wellsite aggregation**
 - Lightweight deployment on rigs (single server/VM)
- **Corporate repository**
 - Historical/regional data storage on VM clusters
- **Real-time enterprise solution**
 - Large-scale deployment for mission-critical operations

Availability Options

- **On-Premise Deployment**
 - Software package for local infrastructure
- **Cloud-Based Deployment**



This friendly application consists in **3 different tabs**:

- **Main Screen:** where you setup the source will send data to convert in WITSML. Also, on this tab the user setup the variables want to be collected and the type of each one.
- **Second Screen:** WITSML Subscription/Configuration Screen.
- **Third Screen:** OPC DA Client, in case to work with OPC format.

o Fully managed services via:

- o Microsoft Azure
- o AWS

Administration & Configuration

Available through:

- On-premise software tools
- Web-based portal:
 - o **WITSMLstream Portal (hosted by JES)**

Driver Features

Available through:

- Supports up to **256 channels**
- **Single device per channel** (peer-to-peer)
- Supports:
 - o Pre-defined WITS records
 - o Undefined WITS records
- **Data types supported:**
 - o Short, Long, DWord, Float, String
- **WITS record-based addressing**
- **Read & Write capabilities**
- Ethernet encapsulation support

Supported Protocols

- Wellsite Information Transfer Specification (**WITS – Passive**)
- **Level 0 (Intra-Rig Transfer Specification)**

System Requirements

Supported OS:

- Windows 10

Minimum Hardware:

- 2.0 GHz Processor
- 4 GB RAM
- 180 MB Disk Space
- Ethernet Card
- Display: Super VGA (800×600) or higher

Value Proposition

- Real-time drilling data visibility
- Seamless interoperability across systems
- Flexible deployment (on-premise or cloud)
- Scalable from rig-level to enterprise-level
- Supports data-driven operational decisions